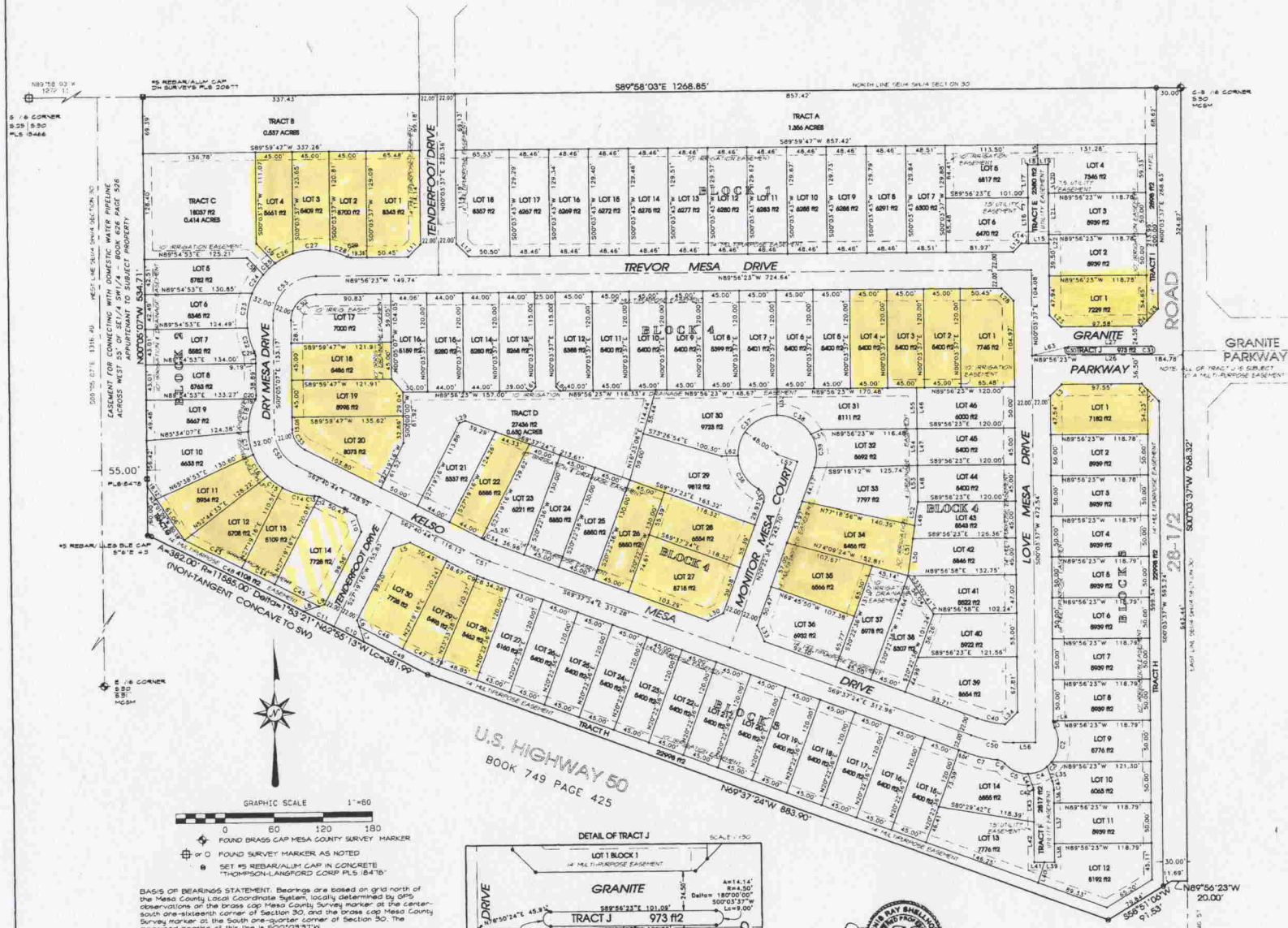
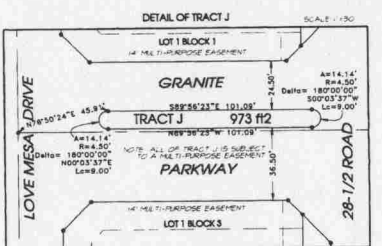


MESA ESTATES



SEGMENT	ARC	CHORD BEARING	RADIUS	DELTA	CHORD
L1	18.71	N44°50'48"N			
L2	10.21	N44°50'33"N			
L3	18.14	S45°03'31"E			
L4	1.66	S00°04'43"E			
C1	3.00	S52°46'51"E	14.50	21°34'40"	6.43
C2	44.28	S09°46'39"E	36.00	66°45'58"	41.82
C3	1.88	S89°51'17"E	36.00	12°02'34"	1.41
C4	25.47	S70°24'34"E	36.00	38°24'38"	25.00
C5	52.25	N89°51'17"E	36.00	67°51'17"	31.11
C6	10.41	N63°15'44"E	18.00	41°06'22"	10.41
C7	40.39	N76°24'40"E	12.00	13°34'31"	40.66
C8	3.98	N64°18'34"E	12.00	27°14'	1.64
C9	12.46	N64°50'34"E	12.00	47°00'	12.88
L5	2.26	S72°58'44"E			
L6	1.00	S74°02'44"E			
C10	4.12	N87°53'38"E	105.00	07°23'	41.32
C11	40.84	N87°43'34"E	105.00	07°02'	40.84
L8	18.91	N75°53'31"E			
L9	8.1	N75°53'31"E			
L10	2.26	N74°02'44"E			
C12	1.12	N85°02'24"E	3.50	4°45'41"	1.12
C13	5.11	N76°11'02"E	3.50	21°45'11"	3.03
C14	4.44	N74°58'24"E	63.00	23°12'12"	4.00
C15	23.5	N85°02'24"E	63.00	16°02'11"	23.07
C16	32.10	N82°41'21"E	63.00	22°25'44"	28.64
C17	28.78	N78°24'40"E	63.00	20°06'28"	26.63
C18	40.3	N72°38'24"E	63.00	26°09'21"	34.78
C19	28	N75°53'31"E	63.00	43°36'50"	18.8
C20	4.22	N09°56'07"E	1.86	20°56'07"	4.20
C21	3.92	N37°22'11"E	1.86	26°20'41"	3.49
C22	29.84	N84°10'14"E	63.00	23°07'01"	24.64
C23	43.43	N08°25'23"E	63.00	24°16'21"	42.48
C24	26.21	N33°36'36"E	63.00	17°34'38"	26.21
C25	30.29	N41°02'39"E	63.00	15°02'00"	30.00
C26	24.88	N62°37'37"E	63.00	8°46'20"	24.78
C27	84.44	N89°51'17"E	63.00	67°51'17"	48.00
C28	2.56	S70°18'14"E	63.00	14°35'11"	2.50
C29	5.50	S76°40'40"E	12.00	28°14'44"	5.48
L11	2.26	N43°38'26"E			
L12	2.26	S44°58'22"E			
L13	14.62	N00°00'00"E			
L14	6.11	S84°58'22"E			
L15	26.00	S64°58'22"E			
L16	18.16	N00°00'00"E			
L17	40.06	N00°00'00"E			
L18	12.50	S00°00'00"E			
L19	2.50	S00°00'00"E			
L20	34.71	N00°00'00"E			
L21	30.00	N00°00'00"E			
L22	63.00	N00°00'00"E			
L23	34.14	N44°50'33"E			
L24	15.00	N55°03'31"E			
L25	14.60	N65°03'31"E			
L26	10.00	N75°03'31"E			
C30	14.14	N00°00'00"E	4.50	180°00'00"	4.50
L27	10.04	S66°58'29"E			
C31	14.14	N00°00'00"E	4.50	180°00'00"	4.50
C32	2.26	N44°58'22"E			
C33	46.17	N64°10'14"E	26.00	40°04'44"	45.02
C34	30.34	S81°22'35"E	26.00	62°35'31"	21.04
L28	1.84	N65°02'56"E			
C35	48.17	N64°10'14"E	26.00	65°46'40"	45.00
C36	31.26	N85°22'36"E			
C37	18.16	N85°22'36"E	3.50	16°06'30"	17.96
C38	46.18	N85°22'36"E	48.00	34°29'41"	41.58
C39	16.30	N44°20'32"E	48.00	16°38'59"	16.66
C40	44.84	N89°51'17"E	48.00	67°51'17"	41.12
C41	42.33	S00°00'00"E	48.00	50°45'56"	41.5
L30	14.00	N00°00'00"E			
L31	32.00	S00°00'00"E			
L32	2.38	S44°12'44"E			
L33	24.84	N00°00'00"E			
L34	21.21	N47°10'39"E			
L35	16.83	N00°00'00"E			
C42	11.4	S04°45'44"E	32.50	N38°43'	11.4
L36	5.86	S00°00'00"E			
L37	50.00	N00°00'00"E			
L38	22.72	S00°00'00"E			
L39	1.84	N00°00'00"E			
L40	26.41	S06°33'59"E			
L41	12.50	N84°58'50"E			
L42	48.31	N00°00'00"E			
L43	38.94	N00°00'00"E			
C43	23.1	N00°00'00"E	1.50	178°49'	23.00
L44	8.65	N49°50'46"E			
C44	11.78	S63°12'12"E	154.00	07°28'52"	11.78
C45	60.39	S62°39'48"E	154.00	07°17'58"	60.39
C46	28.65	S62°14'48"E	154.00	07°14'31"	28.65
C47	40.80	S62°04'52"E	154.00	07°09'51"	40.80
C48	23.04	S68°20'26"E	154.00	10°29'	23.04
C49	81.30	S62°19'12"E	154.00	07°25'54"	81.30
L45	34.48	N00°00'00"E			
L46	30.00	N00°00'00"E			
L47	45.00	N00°00'00"E			
L48	45.00	S00°00'00"E			
L49	45.00	S00°00'00"E			
L50	45.11	S08°06'58"E			
L51	82.11	N08°06'58"E			
L52	24.00	N00°00'00"E			
L53	45.00	N00°00'00"E			
L54	45.00	N00°00'00"E			
L55	30.00	N00°00'00"E			
L56	21.09	N44°51'24"E			
C50	39.41	N74°48'12"E	60.00	20°18'58"	32.41
C51	18.38	N84°04'04"E	60.00	8°56'40"	18.17
C52	24.62	N72°22'22"E	60.00	17°14'31"	24.48
C53	63.34	N44°59'31"E	60.00	42°08'44"	59.29
L57	26.00	N44°51'24"E			
L58	28.37	S44°48'12"E			
L59	35.20	S43°46'51"E			
L60	1.07	N45°03'31"E			
L61	1.07	N45°03'31"E			
L62	20.00	N68°41'09"E			
L63	49.11	N16°56'41"E			

U.S. HIGHWAY 50
 BOOK 749 PAGE 425



- FOUND BRASS CAP MESA COUNTY SURVEY MARKER
- FOUND SURVEY MARKER AS NOTED
- SET #5 REBAR/ALUM CAP IN CONCRETE (THOMPSON-LANGFORD CORP PLS 18476)

BASIS OF BEARINGS STATEMENT: Bearings are based on grid north of the Mesa County Local Coordinate System, locally determined by GPS observations on the brass cap Mesa County Survey marker at the center-south one-sixteenth corner of Section 30, and the brass cap Mesa County Survey marker at the South one-quarter corner of Section 30. The measured bearing of this line is S00°03'31"E.

This plat is a representation of the professional opinion of the undersigned surveyor of the location of the property as described in the title documents referenced herein. The bearings of the boundary lines on the drawing represent the title description related to grid north of the Mesa County Local Coordinate System (NCLCS). The angular integrity of the lines and distances have been preserved unless they have yielded to senior controlling lines.

NOTICE: According to Colorado law you must commence any legal action based upon any defect in the survey within three years after you first discover each defect. In no event may any action based upon any defect in the survey be commenced more than ten years from the date of the certification shown herein.



MESA ESTATES

DAVIDSON HOMES AT MESA ESTATES INC.

SECTION: SE1/4SW1/4 S30 T43N R10E South RANGE: 1 East MERIDIAN: UTE
 7444 Highland Court, Box 110 (R70) 801-6722
 Grand Junction CO 81506 RG@davidsonhomes.com

Date of Survey: Apr 2003 Field Surveyor: RG Revision Date: Dec 13, 2006
 Drawn: DRB Checked: KSI Approved: DRB Job No: 0706-001
 S:\Survey\0706\Code\706.plat.pdf Sheet 2 of 2

RECORDER NOTE: POOR QUALITY DOCUMENT PROVIDED FOR REPRODUCTION